



# 43rd Annual Classic Mariners Regatta

Sunday, June 7, 2026

Presented by the Port Townsend Sailing Association  
With  
The Northwest Maritime Center & Wooden Boat Foundation

## Sailing Instructions

### 1. RULES

- 1.1 This event is governed by the 2025-2028 RRS
- 1.2 The following documents, available on the PTSA website ([ptsail.org](http://ptsail.org)), will apply unless specifically overridden by this document, and are considered incorporated by reference into these Sailing Instructions.
  - (a) 2026 [PTSA General Sailing Instructions](#)
  - (b) [PTSA Safety Recommendations](#)

2. **COMMUNICATION** The primary race committee channel is VHF 68.

### 3. SCHEDULE

- 3.1. One race scheduled for Sunday June 1. Pursuit style race with the first start at 12:00pm.

### 4. COMPETITOR'S MEETING and CHECK IN

- 4.1. All skippers must attend the Competitor's Meeting at 10:00, Sunday, June 7 at the PTSA Clubhouse.

## 2026 CMR Sailing Instructions

- (a) Check-In
- (b) Competitors without an official PHRF will be assigned PTSA provisional rating
- (c) Any changes to the published courses and/or SI's will be announced.
- (d) An attempt will be made to match boat-less Crew with willing Skippers
- (e) RC Time Check
- (f) Distribute final Start Lists for the Pursuit race
- (g) Final Course (long vs short) posted

### 5. START AREA AND RESTRICTIONS ON ENTERING THE START AREA

- 5.1. The start area is the area within 100' of the starting line, including the half-disk around the pin and the committee boat.
- 5.2. Boats are prohibited from entering the start area until 5 minutes before their assigned starting time.

### 6. COURSES

- 6.1. The course for Sunday is a 9-mile random leg bay tour as shown on the Sunday Course Diagram below
- 6.2 The marks will be temporary inflatable marks as indicated in the Course Diagram. Mark roundings are as indicated on the diagram.
- 6.3 [Informational] *Boats are reminded, in accordance with PTSA General Sailing Instructions and state and federal regulations:*
  - (a) *Navigational aid : "B" -- Point Hudson Lighted Red bell buoy #2 is to be passed on the outside (left to shore-ward) unless it is a mark to be rounded.*
  - (b) *Competitors must keep clear of the WA State Ferries (100 yrds+)*
  - (c) *Competitors must keep clear of all Orcas (1000 yrds +)*
  - (d) *Indian Island Security Zone*

### 7. STARTING TIMES, POSTPONEMENTS, AND SIGNALS

- 7.1 The first start will be at 12:00 (the boat with the highest PHRF rating and the Inshore boats)
  - (a) Each boat has its own start time based on their PHRF rating and the course length such that, in theory, with the slowest boat starting first, all finish at the same time.
  - (b) All participants will be assigned their Start time at the Sunday skipper's meeting.
  - (c) A regular start sequence will begin at 11:55:00 to give the slowest boat a 12:00:00 start.
  - (d) Any boat that crosses the start line early (OCS) will automatically be assigned a penalty of 10 minutes. OCS boats will be hailed by the RC (one horn, individual recall flag, and vhf hail) but will not return to restart. The 10-minute penalty will automatically be added to their finish time
  - (e) Inshore Class boats will all have a 350 rating and will be the first boats to start.

## 2026 CMR Sailing Instructions

**8. Scoring:** Awards will be given to the top finishers in each class. There is a special award for the best placed WOODEN boat overall. Awards ceremony will be at 4:00 pm, Sunday, June 7.

### **9. Time Limits:**

9.1 All boats must finish by 15:30 hrs. or will be scored DNF.

9.2 Any boat retiring must notify the RC on VHF68

**10. [Informational]** *The course distance is approximately 9 NM. Starting times are calculated on actual course length.*

10.1 Assigned starting times will be provided at the skippers meeting

10.2 All boats shall use a GPS or a clock set from nist.time.gov for their timing.

10.3 The race committee may broadcast occasional time checks, and/or announcements of the postponement delay to start times, on the primary race committee channel (68). Such broadcasts, if any, will not be considered outside assistance. The lack or failure of such a broadcast, or a boat's failure to hear such a broadcast, will not be grounds for redress. This changes RRS 41 and 62.1(a).

10.4 Boats that have checked in but not started by the scheduled time of the last starter, plus 20 minutes, will be scored DNS without a hearing. This changes RRS 60.5(b)(3), A5.1 and A5.2. Competitors are encouraged to print or download a copy of the SI's. There will be a LIMITED number of copies available at the Competitors Meeting

### **11. RISK STATEMENT, RELEASE AND RIGHT TO USE NAME AND LIKENESS**

11.1. RRS 3 states: "The responsibility for a boat's decision to participate in a race or to continue to race is hers alone." By participating in this event each competitor agrees and acknowledges that sailing is a potentially dangerous activity with inherent risks. These risks include strong winds, rough seas, sudden changes in weather, failure of equipment, boat handling errors, poor seamanship, loss of balance on an unstable platform, and fatigue resulting in increased risk of injury. **Inherent in the sport of sailing is the risk of permanent, catastrophic injury or death by drowning, trauma, hypothermia or other causes.**

11.2. The PTSA will not be responsible for damage to any boat or other property or the injury to any competitor, including death, sustained as a result of participation in these events. By participating in these events, each competitor agrees to release the PTSA, its officers, volunteers, and vendors, from any and all liability associated with such participation to the fullest extent permitted by law.

11.3. By participating in this event, competitors automatically grant to the organizing authority and the event sponsors the unconditional, perpetual right and authority to publish and broadcast anywhere in the world, for any purpose and in any media, the names, images, and information relating to the crew and photographs, video footage, and audio recordings taken of the boat and its crew prior to, during, and after the regatta without compensation.

11.4. By submitting an entry form, the skipper acknowledges and accepts the media conditions referred to herein, and grants the rights referred to herein on behalf of all crew members.

## Sunday Pursuit Race

**The Start:**- Each boat will be given its own start time based on that boat's PHRF rating and the length of the course. The slowest boats start first.

A list of individual boat start times for both long and short courses will be distributed at the Sunday Morning Skipper's Meeting.

Inshore Class boats generally do not have PHRF ratings, but for this race they will be assigned a rating of 350 and will start with the first starter.

The Start/Finish line will be in the South-west end of the Bay and will be about square to the wind. Boats will start to windward. (If in doubt, for a windward start the Pin will be on your Port side.)

The first boat will be given the full start sequence (Horns & Flags). Each subsequent boat will NOT receive an audible signal or flags at their assigned start time.

Should the first start be delayed for any reason, the Race Committee will announce on VHF 68 and visually display the number of whole minutes everyone must add to their start time.

**The course** :-The course, as shown below, is 9 nautical miles.

If the wind has N component;-

Start  
Yel. Tet. T1 to Stbd.  
Or. Cyl. C2 to Port  
Yel. Tet. T3 to Stbd.  
Yel. Tet. T4 to Stbd.  
Yel. Tet. T5 to Stbd.  
Finish

If wind has S component;

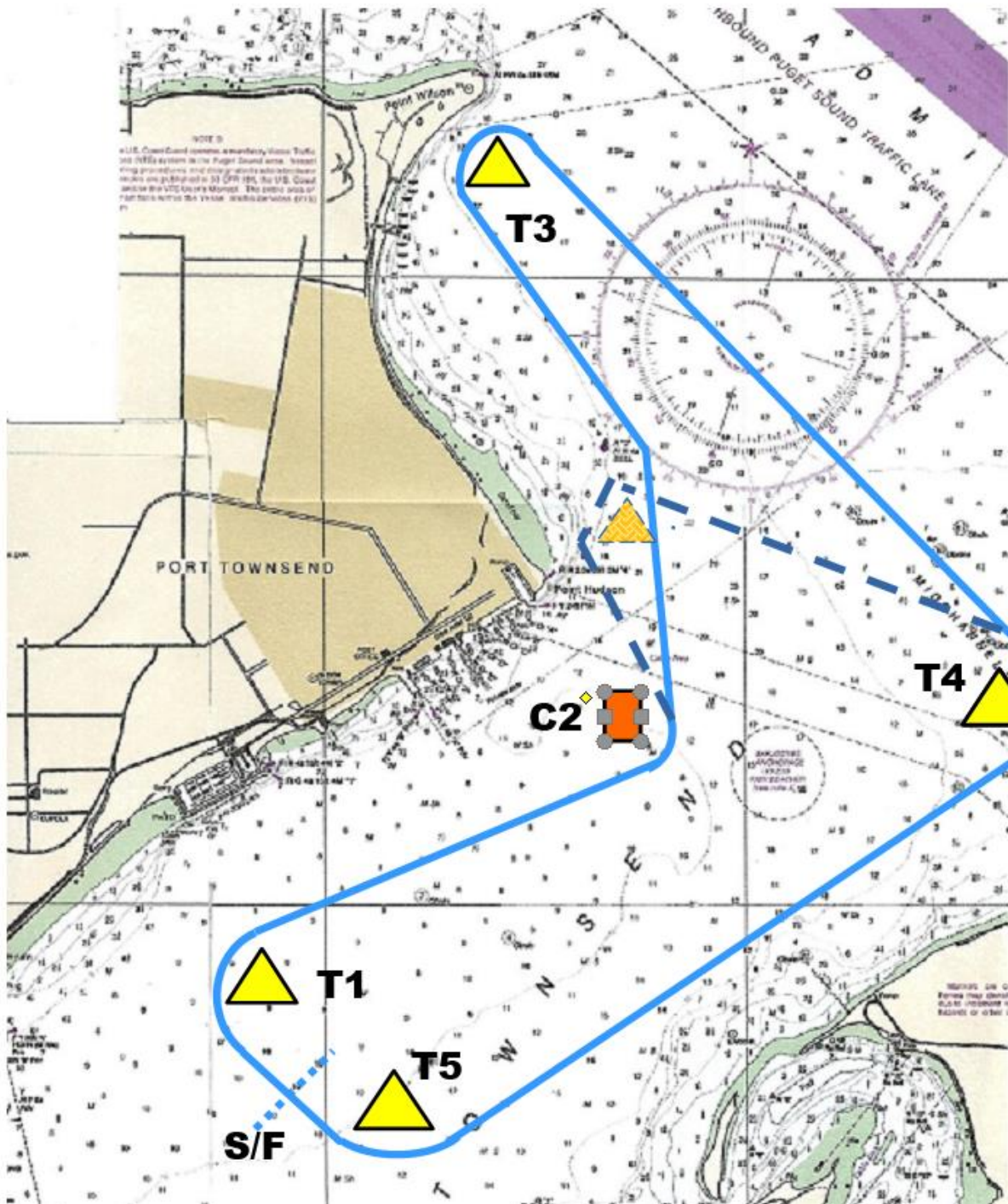
Start  
Yel. Tet. T5 to Port  
Yel. Tet .T4 to Port  
Yel..Tet. T3 to Port  
Or. Cyl. C2 to Stbd.  
Yel.Tet. T1 to Port  
Finish

NOTE: The Pt Hudson Red Bell Buoy is left to Shoreward at all times.

**Finish Times:**- Will be recorded for all boats finishing.

**Short-Course:**- If poor wind on race day indicates a need for a shorter course. the general shape of the course and the numbering and rounding order of the marks will remain the same. The change is that Mark **T3** will move from Pt Wilson to just South of the Pt Hudson Bell Buoy as in the diagram to the left. The short course distance 6.5 nm.

### SUNDAY PURSUIT RACE COURSE DIAGRAM



## 2026 CMR Sailing Instructions

### Location of Marks

Note: Marks Can Drag Anchor

Committee Boat	N48°05.70' (N48°05'42")	W122°46.30' (W122°46'18")
Mark C2	N48°06.52' (N48°05'31")	W122°44.42' (W122°44'25")
Mark T3 Full Course	N48°08.30' (N48°08'18")	W122°45.40' (W122°45'24")
Mark T4	N48°06.78' (N48°06'47")	W122°43.10' (W122°43'06")
Marks T5 & T1	Locations will be determined after CB anchors and checks the wind direction. For the correct course length, T1 & T5 should be .5 nm. to Windward and Leeward of the CB.	
Mark T3 Short Course	N48°07.30' (N48°07'18")	W122°44.60' (W122°44'36")